

VICINITY MAP - N.T.S.

**APPROVALS**

AS COUNTY DEPARTMENT OF PUBLIC WORKS  
 READ AND APPROVED THIS 14 DAY OF  
March A.D., 2012

AS COUNTY ENGINEER

AS COUNTY HEALTH DEPARTMENT

BY CERTIFY THAT THE EVERGREEN RIDGE P.U.D.  
 NO. 1, DIVISION NO. 4 PLAT HAS BEEN EXAMINED BY  
 ME AND I FIND THAT THE SEWAGE AND WATER SYSTEM  
 SHOWN DOES MEET AND COMPLY WITH ALL  
 REQUIREMENTS OF THE COUNTY HEALTH DEPARTMENT.

THIS 22 DAY OF March A.D., 2012

AS COUNTY HEALTH OFFICER

BY CERTIFY THAT THE EVERGREEN RIDGE P.U.D.

NO. 1, DIVISION NO. 4 PLAT HAS BEEN EXAMINED BY  
 ME AND I FIND THAT IT CONFORMS TO THE COMPREHENSIVE  
 PLAN OF THE KITTITAS COUNTY PLANNING COMMISSION.

THIS 23 DAY OF MARCH A.D., 2012

AS COUNTY PLANNING DIRECTOR

BY CERTIFY THAT THE TAXES AND ASSESSMENTS

PAID FOR THE PRECEDING YEARS AND FOR THIS  
 YEAR WHICH THE PLAT IS NOW TO BE FILED.

NOS.: 20-14-12085-0021 (954708),  
 12085-0022 (954709), PORTION OF  
 101030-0020 (12065) & 20-14-12022-0008

THIS 22 DAY OF March A.D., 2012

AS COUNTY TREASURER

BY CERTIFY THAT THE EVERGREEN RIDGE P.U.D.

NO. 1, DIVISION NO. 4 PLAT HAS BEEN EXAMINED BY  
 ME AND I FIND THE PROPERTY TO BE IN AN ACCEPTABLE  
 CONDITION FOR PLATTING.

NOS.: 20-14-12085-0021 (954708),  
 12085-0022 (954709), PORTION OF  
 101030-0020 (12065) & 20-14-12022-0008

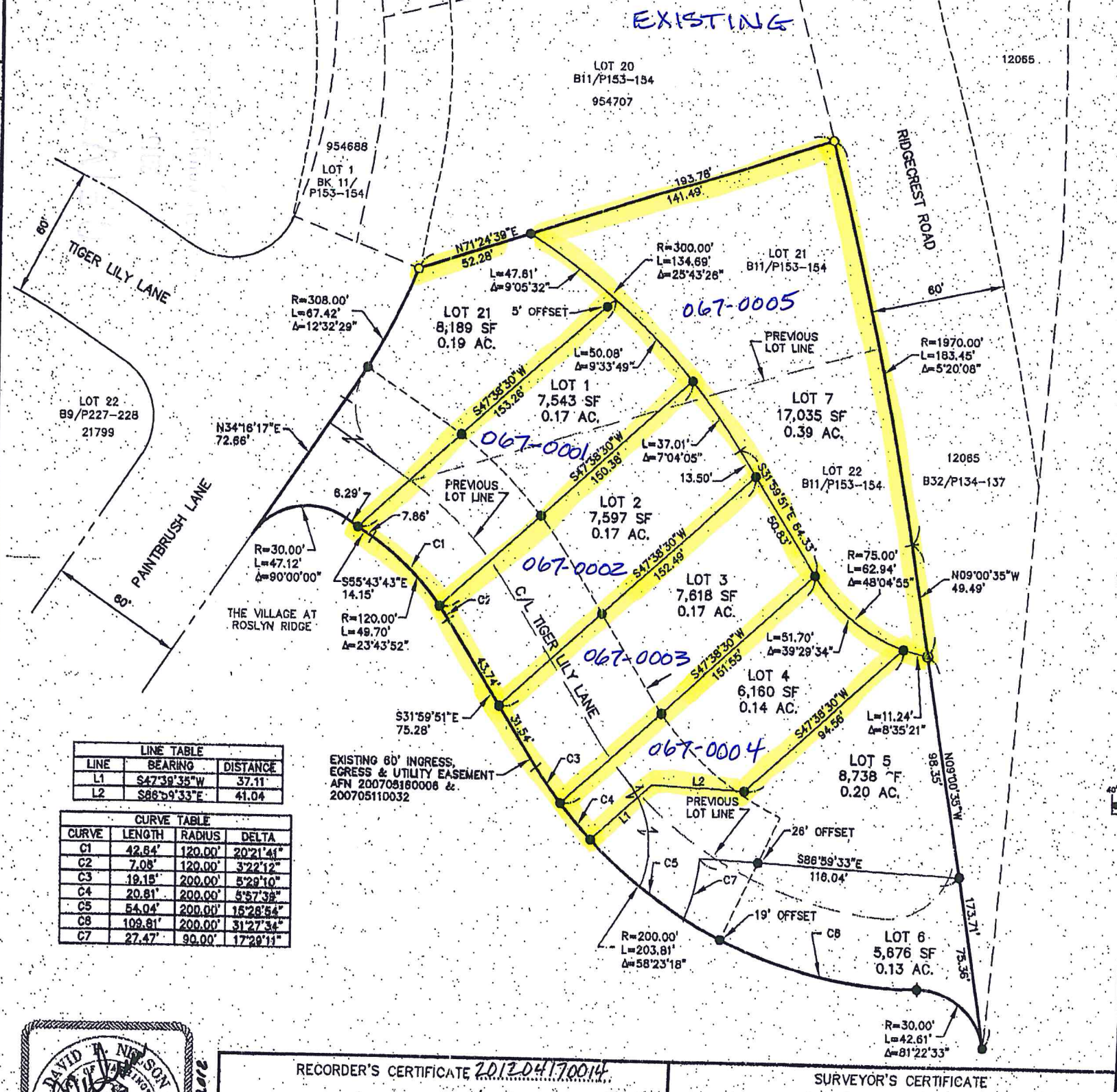
THIS 22 DAY OF March A.D., 2012

AS COUNTY ASSESSOR

BY CERTIFY THAT THE EVERGREEN RIDGE P.U.D.

NO. 1, DIVISION NO. 4 PLAT HAS BEEN EXAMINED BY  
 ME AND I APPROVED THIS 17<sup>th</sup> DAY OF  
April A.D., 2012

AS COUNTY COMMISSIONERS  
 COUNTY, WASHINGTON



LINE TABLE

LINE	BEARING	DISTANCE
L1	S47°39'35"W	37.11
L2	S88°59'33"E	41.04

CURVE TABLE

CURVE	LENGTH	RADIUS	DELTA
C1	42.84'	120.00'	20°21'41"
C2	7.08'	120.00'	3°22'12"
C3	19.15'	200.00'	5°29'10"
C4	20.81'	200.00'	5°57'38"
C5	54.04'	200.00'	15°28'54"
C6	109.81'	200.00'	31°27'34"
C7	27.47'	90.00'	17°28'11"

EXISTING 60' INGRESS,  
 EGRESS & UTILITY EASEMENT  
 AFN 200708180006 &  
 200705110032



RECORDER'S CERTIFICATE 201204170014

SURVEYOR'S CERTIFICATE



VICINITY MAP - N.T.S.

**APPROVALS**

AS COUNTY DEPARTMENT OF PUBLIC WORKS  
 READ AND APPROVED THIS 14<sup>th</sup> DAY OF  
March A.D., 2012

AS COUNTY ENGINEER

AS COUNTY HEALTH DEPARTMENT

BY CERTIFY THAT THE EVERGREEN RIDGE P.U.D.  
 1, DIVISION NO. 4 PLAT HAS BEEN EXAMINED BY  
 I FIND THAT THE SEWAGE AND WATER SYSTEM  
 SHOWN DOES MEET AND COMPLY WITH ALL  
 REQUIREMENTS OF THE COUNTY HEALTH DEPARTMENT.

THIS 22 DAY OF March A.D., 2012

AS COUNTY HEALTH OFFICER

CLERK OF COUNTY PLANNING DIRECTOR

BY CERTIFY THAT THE EVERGREEN RIDGE P.U.D.  
 1, DIVISION NO. 4 PLAT HAS BEEN EXAMINED BY  
 I FIND THAT IT CONFORMS TO THE COMPREHENSIVE  
 PLAN OF THE KITTITAS COUNTY PLANNING COMMISSION.

THIS 23<sup>rd</sup> DAY OF MARCH A.D., 2012

AS COUNTY PLANNING DIRECTOR

CLERK OF KITTITAS COUNTY TREASURER

BY CERTIFY THAT THE TAXES AND ASSESSMENTS  
 PAID FOR THE PRECEDING YEARS AND FOR THIS  
 YEAR WHICH THE PLAT IS NOW TO BE FILED.

NOS.: 20-14-12085-0021 (954708),  
 12085-0022 (954709), PORTION OF  
 12065-0020 (12065) & 20-14-12022-0008

THIS 22 DAY OF March A.D., 2012

AS COUNTY TREASURER

CLERK OF KITTITAS COUNTY ASSESSOR

BY CERTIFY THAT THE EVERGREEN RIDGE P.U.D.  
 1, DIVISION NO. 4 PLAT HAS BEEN EXAMINED BY  
 I FIND THE PROPERTY TO BE IN AN ACCEPTABLE  
 CONDITION FOR PLATTING.

NOS.: 20-14-12085-0021 (954708),  
 12085-0022 (954709), PORTION OF  
 12065-0020 (12065) & 20-14-12022-0008

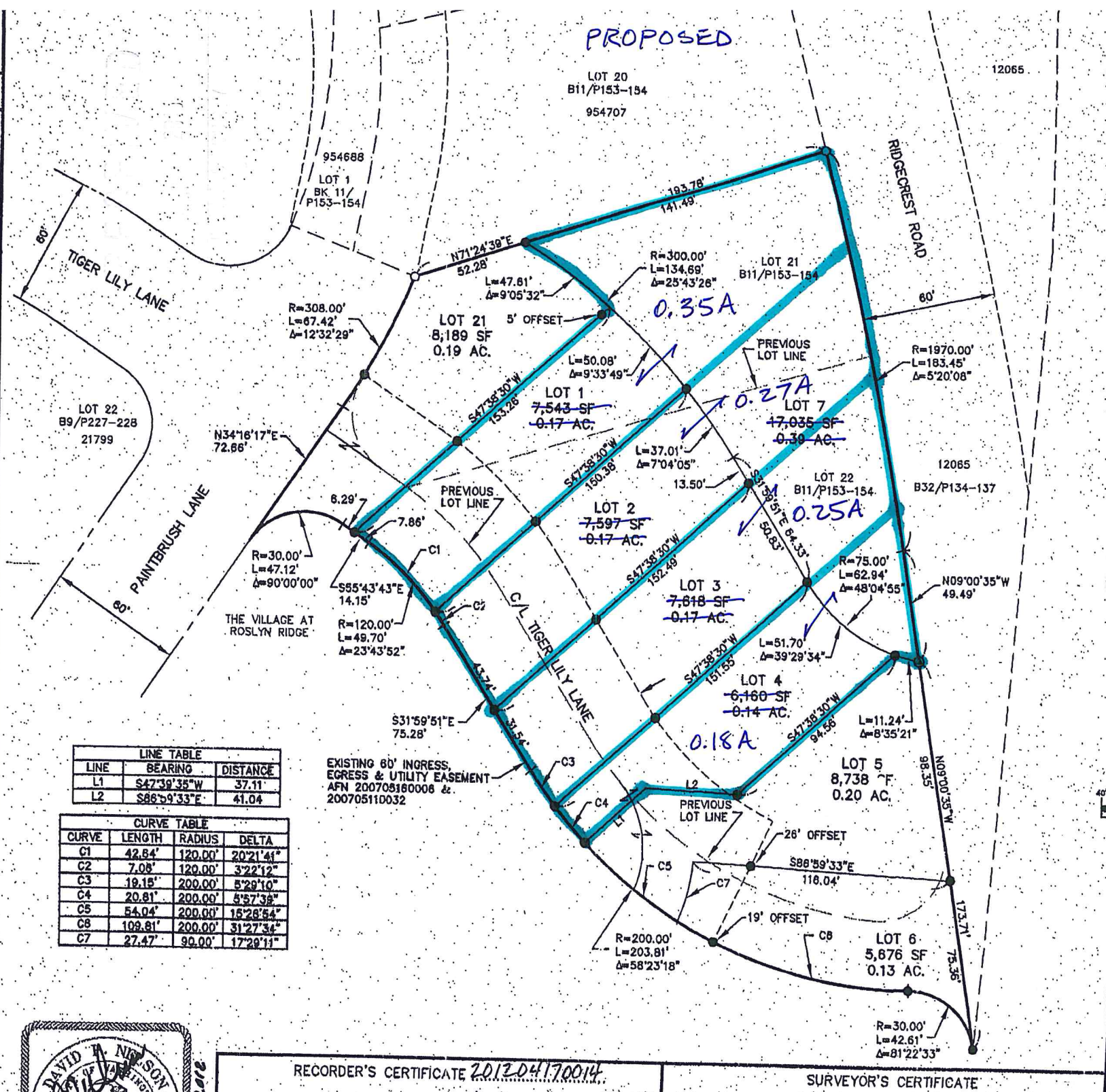
THIS 22 DAY OF March A.D., 2012

AS COUNTY ASSESSOR

CLERK OF COUNTY BOARD OF COMMISSIONERS

READ AND APPROVED THIS 17<sup>th</sup> DAY OF  
April A.D., 2012

BY COUNTY COMMISSIONERS  
 COUNTY, WASHINGTON



**LINE TABLE**

LINE	BEARING	DISTANCE
L1	S47°39'35"W	37.11
L2	S86°59'33"E	41.04

**CURVE TABLE**

CURVE	LENGTH	RADIUS	DELTA
C1	42.84'	120.00'	20°21'41"
C2	7.08'	120.00'	3°22'12"
C3	19.15'	200.00'	5°29'10"
C4	20.81'	200.00'	5°57'38"
C5	54.04'	200.00'	15°28'54"
C6	109.81'	200.00'	31°27'34"
C7	27.47'	90.00'	17°28'11"



RECORDER'S CERTIFICATE 201204170014

SURVEYOR'S CERTIFICATE